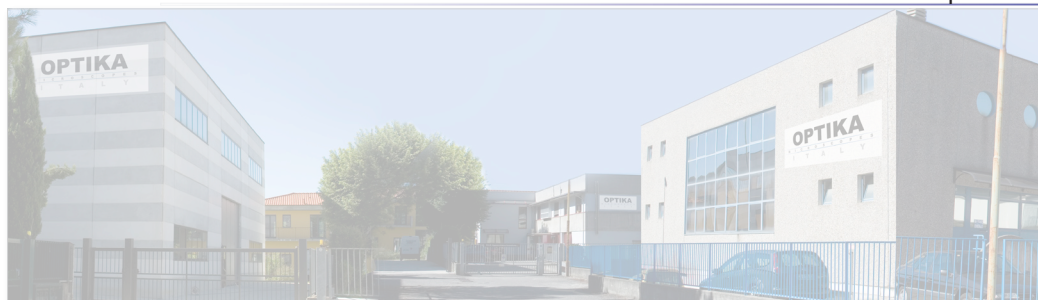




SERIE SZR

Stereomicroscopi da laboratorio



OPTIKA Microscopes belongs to the group “M.A.D. Apparecchiature Scientifiche” and, with its almost 40 years experience in the field of scientific instrumentation, is worldwide known as a leading Company for optical microscopes’ production and distribution.

The Company, a team of 70 people in 3 different European locations, is engaged in the development of new models, production, quality control, sales and after-sales service.

OPTIKA microscopes excellence, concerning quality, innovation, competitive prices and customer assistance, reaches the end users through a wide network of national and international distributors.

SZR SERIES

THE SERIES

The SZR stereomicroscope series is specifically intended for research workers. Its functional features and its optical and mechanical qualities make it a reference point in the scientific research instruments market. It comprises 14 models typified by the technical solutions devised to meet the specific needs of the user.

The binocular and trinocular heads provided with zoom optics represent the heart of the SZR series. These are backed by numerous types of bases and stands suitable for any type of use. A wide range of accessories considerably increases the potential of these instruments.



SZR SERIES - Technical specifications

Part	Description
Heads	Bino or trinocular, 360° rotating and 45° inclined.
Interpupillary distance	Adjustable between 52 and 75 mm.
Dioptic compensation	On both eyepiece tubes.
Eyepieces	EWF10x/22mm, high-point type for glasses.
Working distance	110 mm.
Objective	Parfocal achromatic zoom 0,67x...4,5x with continuously variable magnification (max. 45x in the standard configuration, can be increased to 180x).
Specimen stage	Except overhanging models, the instruments are fitted with a black/white disc for contrast and specimen clamps. Models with transmitted illumination also fitted with frosted glass disc.
Focusing	By means of rack and pinion system, controlled by a pair of knobs.
Illumination	12V/15W halogen bulbs with light intensity adjustments. SZR-9 and SZR-10 models are the only ones with built-in illumination system. All others models with illumination have a system based on external power supply unit.
Stands	The series have 5 kinds of stands for every requirement. Simple for vision without transmitted illumination; simple + trans-illuminator base for incident and transmitted illumination; with incorporated illumination system in the base; the last ones with overhanging stands (simple or hinged), that allow very large objects to be viewed and to be handled or worked.

The models

Model	Head	Eyepieces	Objective	Stand	Illuminator (s)
SZR-1	Binocular	EWF10x/22	0,67...4,5x	Simple base	-----
SZR-2	Trinocular	EWF10x/22	0,67...4,5x	Simple base	-----
SZR-3	Binocular	EWF10x/22	0,67...4,5x	Simple base	Incident halogen 12V/15W, external power supply
SZR-4	Trinocular	EWF10x/22	0,67...4,5x	Simple base	Incident halogen 12V/15W, external power supply
SZR-5	Binocular	EWF10x/22	0,67...4,5x	Trans-illuminator base	Incid. or transm., halogen 12V/15W, external power supply
SZR-6	Trinocular	EWF10x/22	0,67...4,5x	Trans-illuminator base	Incid. or transm., halogen 12V/15W, external power supply
SZR-7	Binocular	EWF10x/22	0,67...4,5x	Trans-illuminator base	Incid. and transm., halogen 12V/15W, external power supply
SZR-8	Trinocular	EWF10x/22	0,67...4,5x	Trans-illuminator base	Incid. and transm., halogen 12V/15W, external power supply
SZR-9	Binocular	EWF10x/22	0,67...4,5x	Pillar, base with illuminators	Incid. and transm., halogen 12V/15W, internal power supply
SZR-10	Trinocular	EWF10x/22	0,67...4,5x	Pillar, base with illuminators	Incid. and transm., halogen 12V/15W, internal power supply
SZR-11	Binocular	EWF10x/22	0,67...4,5x	Simple overhanging	-----
SZR-12	Trinocular	EWF10x/22	0,67...4,5x	Simple overhanging	-----
SZR-13	Binocular	EWF10x/22	0,67...4,5x	Hinged overhanging	-----
SZR-14	Trinocular	EWF10x/22	0,67...4,5x	Hinged overhanging	-----

SZR SERIES



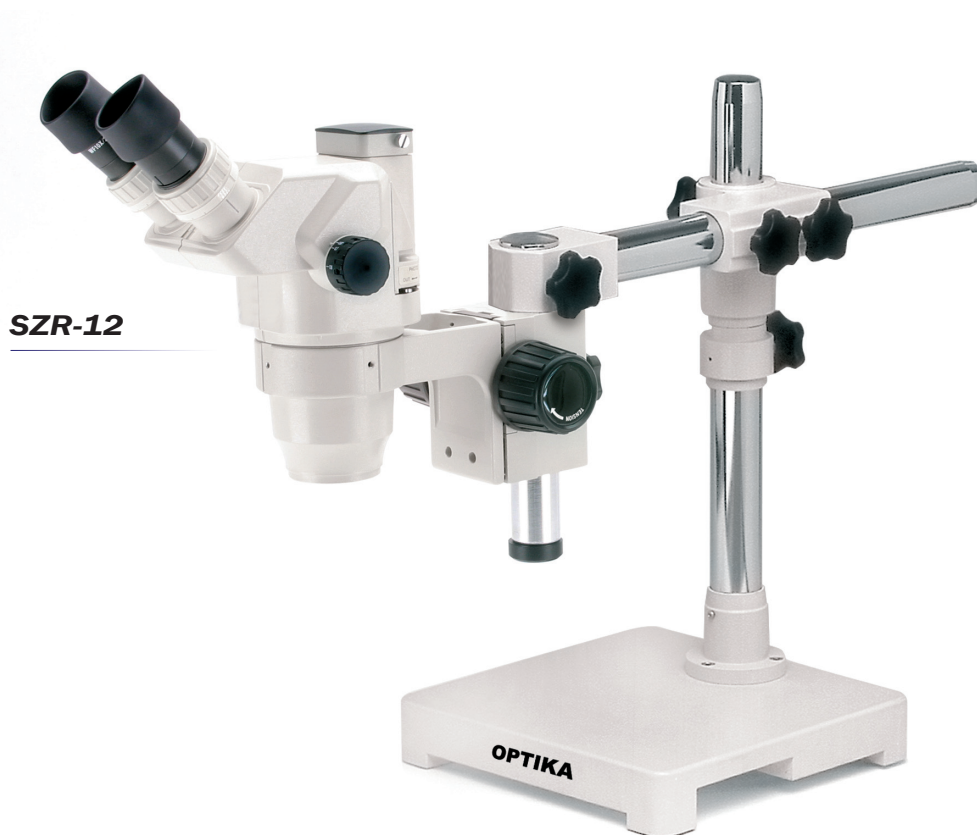
SZR-2



SZR-6



SZR-10

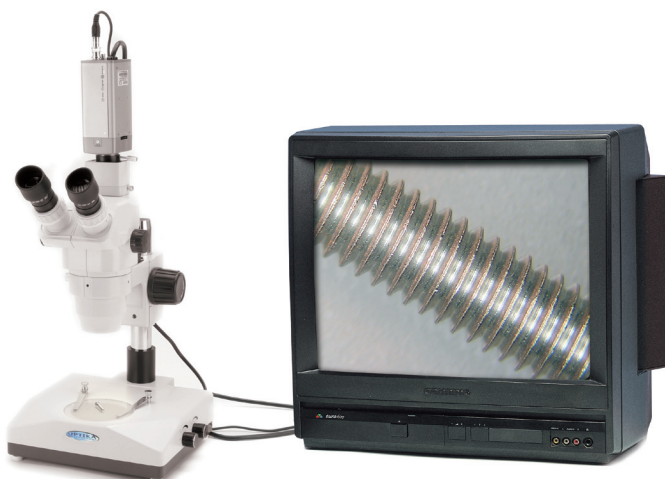
SZR SERIES**SZR-12****SZR-14**

SZR SERIES

Photo/video applications

For microphotography with SRL 35mm type or digital type cameras, a model fitted with a trinocular head and the following optional accessories are required for taking pictures:

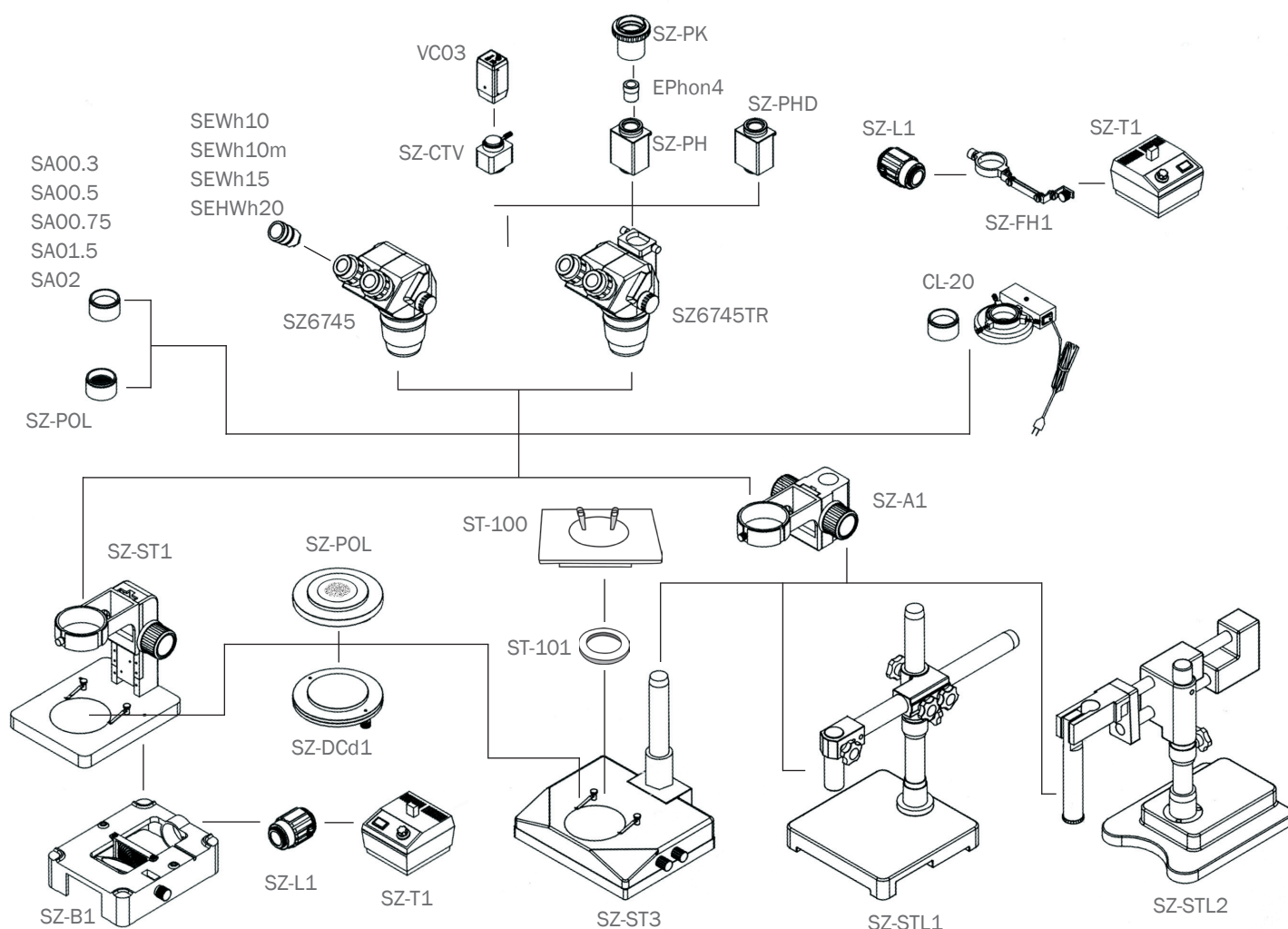
- SRL 35mm cameras: SZ-PH (photo tube, adapter for T/2 ring and 4x photo eyepiece). Purchase of the T/2 ring suitable to the type of SRL camera used is also indispensable.
- DIGI digital camera set: SZ-PHD tube adapter. The optical adapter is included in DIGI set. For video microscopy, a model fitted with a trinocular head and the following optional accessories are required for shooting with a CCD video camera: SZ-CTV CCD camera adapter and VC03 high-resolution CCD colour video camera. VC03 is supplied complete with built-in transformer, monitor connection cable, SCART adapter for TV connection and instruction manual.



SZR SERIES - Optional accessories and spare components

Optional accessories

A wide range of optional accessories is available in order to extend the possibilities offered by the SZR series instruments: additional optics; accessories for all photography/video applications, including the possibility of using DIGI digital camera set; darkfield & polarizing light.



SZR SERIES - Accessories



- | | |
|----------|--|
| SZ6745 | Zoom binocular head, with eyepieces |
| SZ6745TR | Zoom trinocular head, with eyepieces |
| SZ-ST1 | Simple base |
| SZ-B1 | Slide projection base |
| SZ-ST3 | Pillar stand |
| SZ-STL1 | Simple overhanging stand |
| SZ-STL2 | Hinged overhanging stand |
| SZ-A1 | Focusing system |
| SZ-DCd1 | Darkfield condenser |
| SZ-POL | Polarising set (filters and rotating stage) |
| SZ-L1 | 12V/15W halogen illuminator |
| SZ-FH1 | Arm for illuminator SZ-L1 |
| SZ-T1 | Transformer for SZ-L1 |
| SZ-PH | Photo tube complete with SZ-PK T/2 ring adapter and SEPhon4 photo eyepiece |
| SZ-PHD | Adapter for digital cameras DIGI series |
| SZ-CTV | CCD camera adapter |
| SEWh15 | Eyepieces (pair) WF15x/16mm |
| SEHWh20 | Eyepieces (pair) WF20x/12mm |
| SEWh10m | Micrometric eyepiece WF10x/22mm |
| SA00.3 | Additional lens 0,3x (w.d. 287mm) |
| SA00.5 | Additional lens 0,5x (w.d. 185mm) |
| SA00.75 | Additional lens 0,7x (w.d. 120mm) |
| SA01.5 | Additional lens 1,5x (w.d. 49mm) |
| SA02 | Additional lens 2x (w.d. 28mm) |
| ST-100 | Hand moving stage |
| ST-101 | Ring adapter for mounting ST-100 on SZR series |
| ST-036 | Eye cups (pair) type 2 |
| ST-042 | White/black object-plate, type 3, dia. 100 mm |
| ST-043 | Glass stage, type 3, dia. 100 mm |
| ST-038 | Halogen bulb, 12V/15W |
| ST-037 | Halogen bulb, 12V/15W, with dichroic mirror |
| ST-039 | Dust cover type 14 |